



# **DOWN TOWN TRANSFORMATION**

**(RAMSEES-ALATABA-ALTAHREER SQUARES' ZONE)**

**SKYLINE AND HEIGHTS**

**GROUP :**

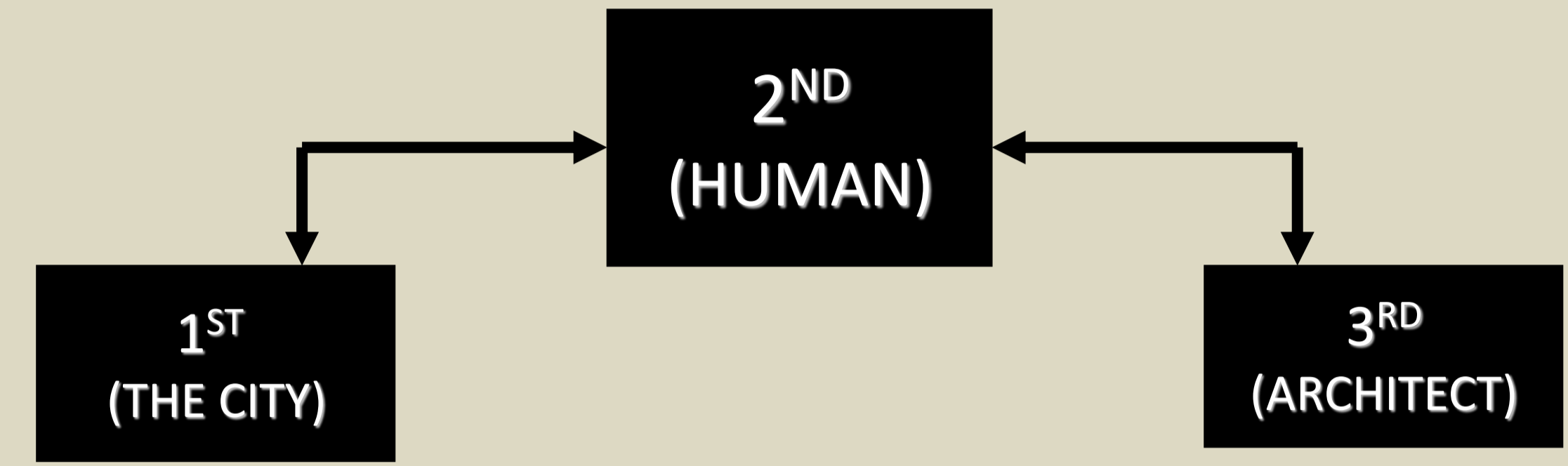
- 1.AHMED FOUAD
- 2.AHMED SARHAN
- 3.YOUMNA ELTALLY
- 4.HEBA MOHAMED
- 5.MENNA MORSY

**COURSE INSTRUCTOR: DR.KAMAL MAHMOUD ELGABALAWY**

**TAs: ENG.DINA**

# CONTENT

- Zone map
- Introduction
- Methodology
- CITY EXISTANCE (DOWNTOWN ZONE) RAMSEES SQUARE
- Attracting points & General square analysis
- DEVELOPMENT & TRANSFORMATION OF THE CITY
- Skyline and building heights (general study-study on the scale of a building)



through timeline



- Conclusion

# ZONE MAP

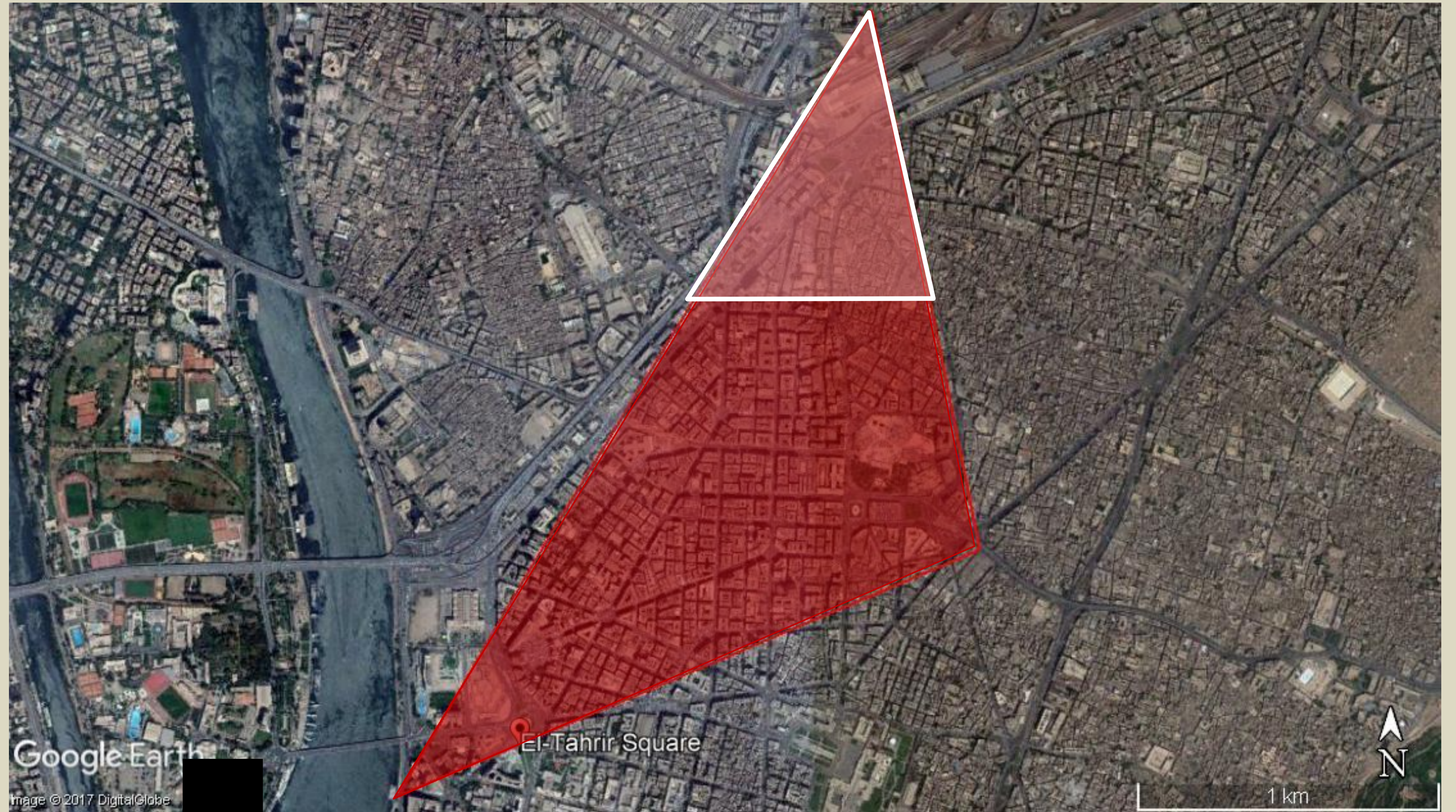
RAMSEES  
SQUARE

ALATABA  
SQUARE

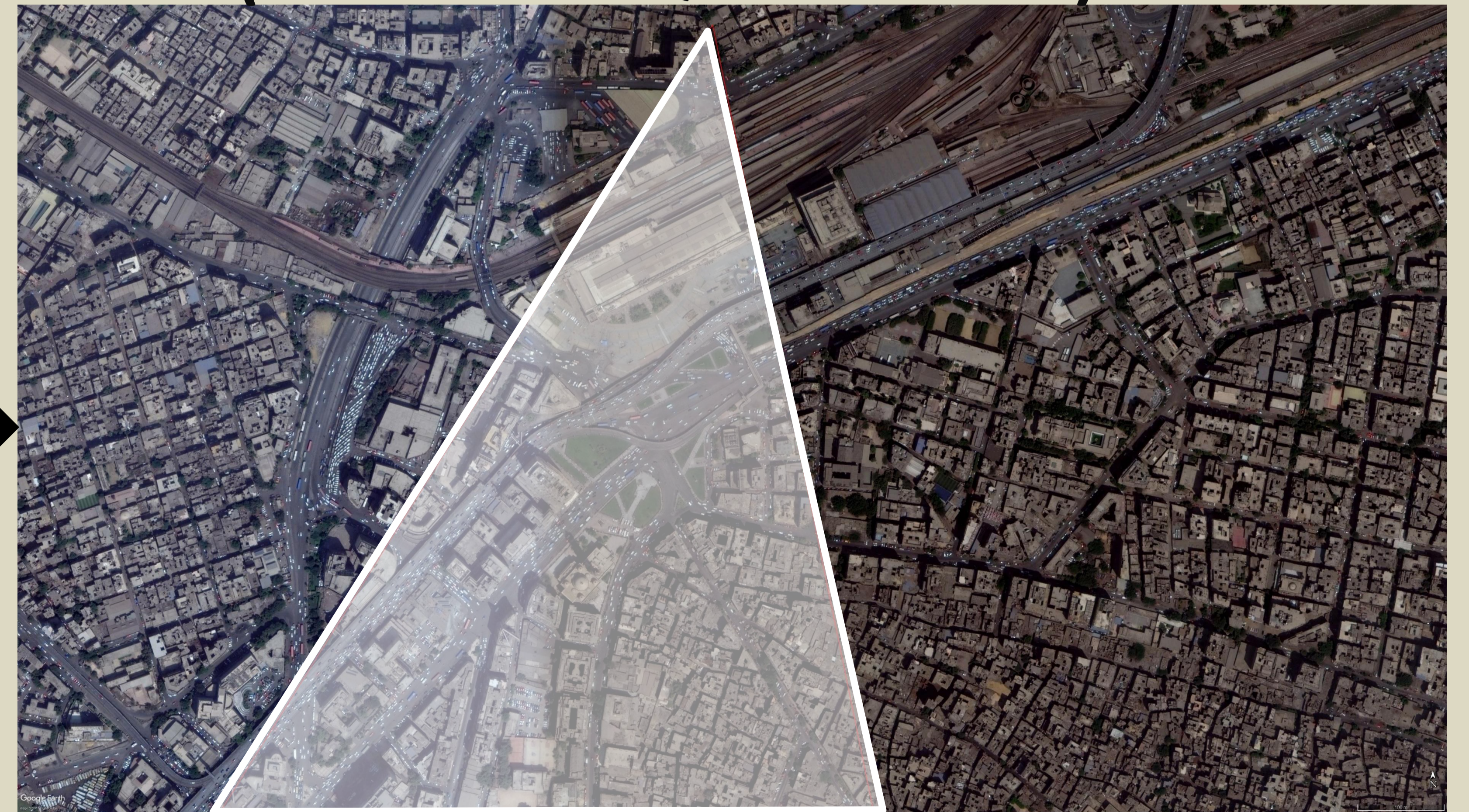
ALTAHREER  
SQUARE

RAMSEES  
SQUARE  
ZONE

## (RAMSEES-ALATABA-ALTAHREER SQUARE ZONE)



## (RAMSEES SQUARE ZONE)



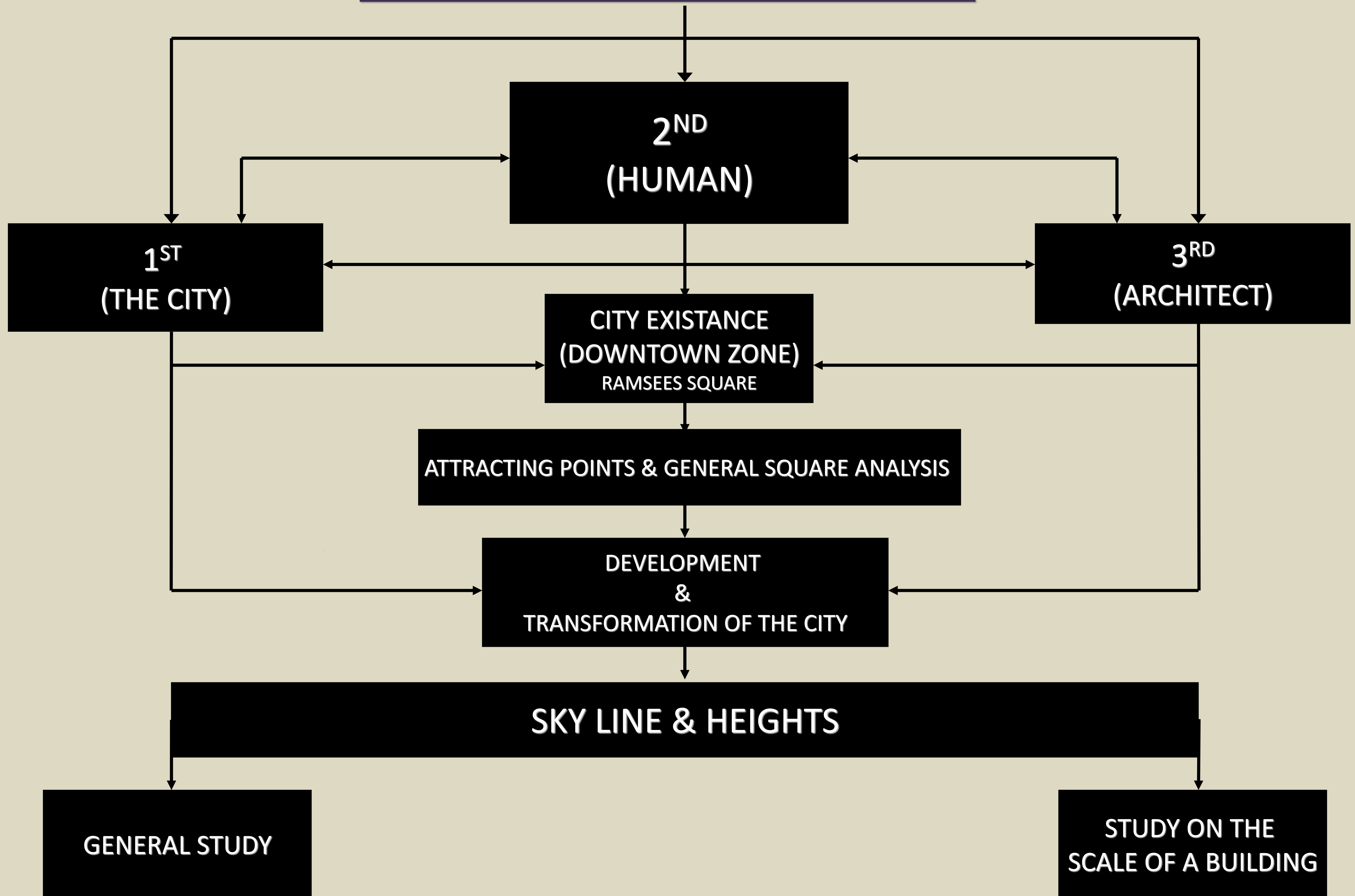
# INTRODUCTION

**DOWNDOWN** is characterized by different architectural and cultural features rather than other city zones. This has led to a change in the intellectual and development in all fields witnessed by the world in the last period, some of which are located in Egypt. Hence the change of the global architectural concepts which influenced the local concepts to the urbanization Which is located in the study center for the direction of the old buildings and set up a modern investment buildings with a new architectural concept located in the center of the country. The aim of this research is to present, interpret and analyze the research problem by focusing on some buildings and present skyline and heights of selected zone .



# METHODOLOGY

## STUDY THROUGH 3 DIMENSIONS

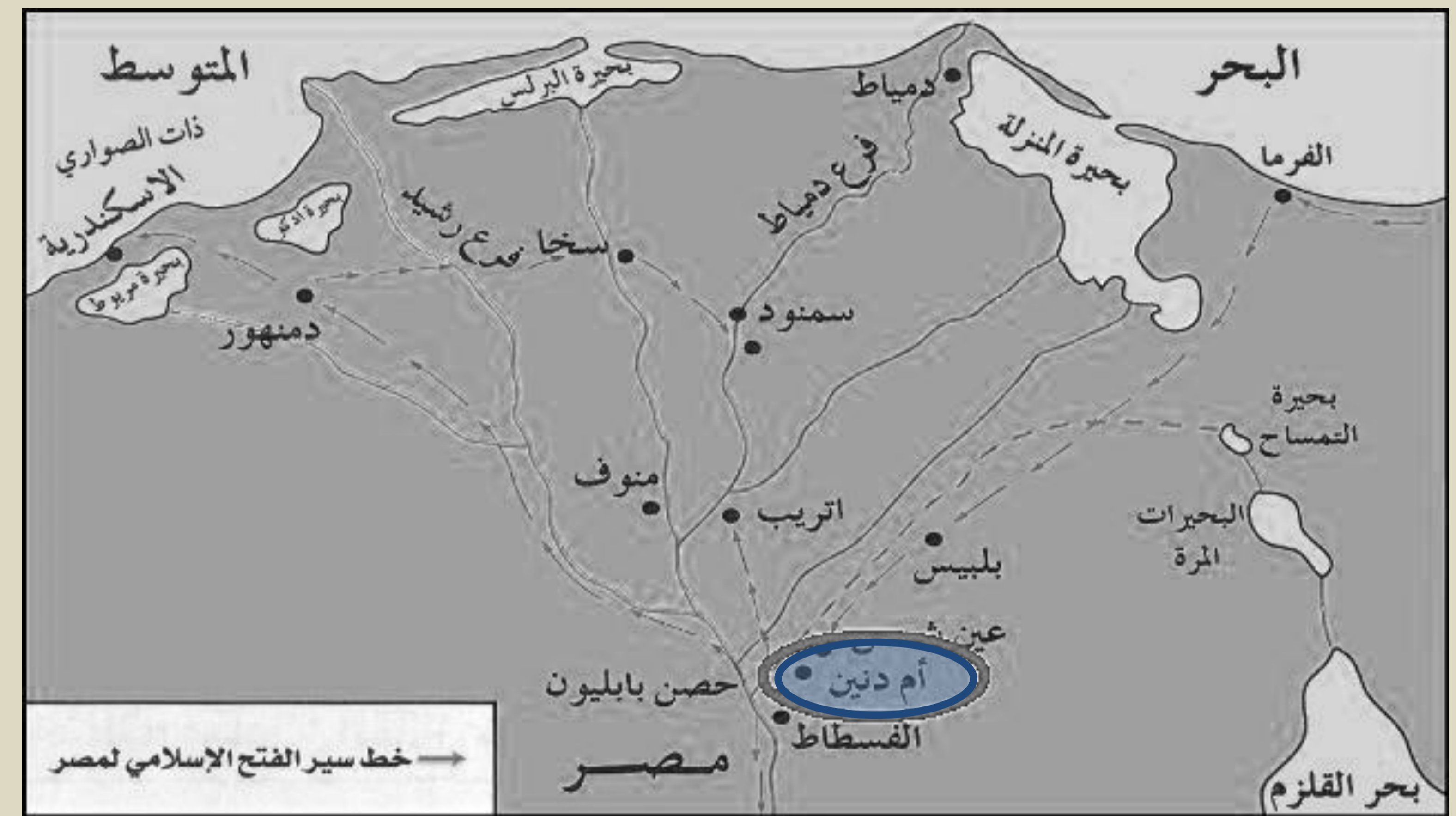


# CITY EXISTANCE (DOWNTOWN ZONE) RAMSEES SQUARE

Ramses Square was a village ,It was called Umm Dennin ,and Arab were concentrated in it, the Arab created , A mosque called Awlad Anan Mosque, The mosque was rebuilt in the Fatimid era,This mosque was demolished by handof The French in the French campaign on EgyptThis mosque is the same mosque "conquest" currently  
 During the reign of Mohammed Ali Pasha Ramses Square was a large park.  
 Khedive Abbas set up a railway line connects Cairo And Alexandria and he put th main railwaystation on this large park, later the park name shanged to Bab Al-hadeed due to the presence of the station



1894



640

**\*The first central railway in Africa and middle east.**



1897



1792